

Datasheet

Human CCKBR Recombinant Protein, Fragment

Catalog Number: BGT-PPT-27751

Regulation Status: For research use only (RUO)

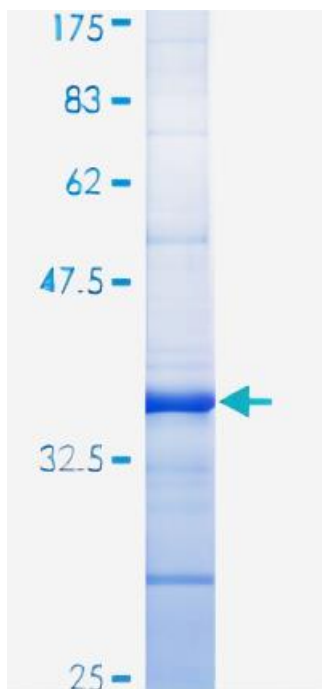
Product Description: Human CCKBR partial ORF (AAH00740, 215 a.a. - 327 a.a.) recombinant protein with GST-tag at N-terminal.

Sequence:

RQTWSVLLLLLLFFIPGVVMAVAYGLISRELYLGLRFDG
DSDSDSQSRVRNQGGLPGAHVHQNGRCRPETGAVGE
DSDGCVQLPRSRPALELTALTAPGPGSGSRPTQAKL
LA

Host: Wheat Germ (in vitro)

Theoretical MW (kDa): 38.06



Interspecies Antigen Sequence: Mouse (72)

Applications: AP, Array, ELISA, WB-Re

Preparation Method : in vitro wheat germ expression system

Purification: Glutathione Sepharose 4 Fast Flow

Storage Buffer : 50 mM Tris -HCl , 10 mM reduced Glutathione, pH=8.0 in the elution buffer.

Storage Instruction : Store at -80°C. Aliquot to avoid repeated freezing and thawing.

Entrez GeneID: 887

Gene Symbol: CCKBR

Gene Alias: CCK-B, CCK2R, GASR

Gene Summary : This gene encodes a G-protein coupled receptor for gastrin and cholecystokinin (CCK), regulatory peptides of the brain and gastrointestinal tract . This protein is a type B gastrin receptor , which has a high affinity for both sulfated and nonsulfated CCK analogs and is found principally in the central nervous system and the gastrointestinal tract . A misspliced transcript variant including an intron has been observed in cells from colorectal and pancreatic tumors. [provided by RefSeq]