

Recombinant Human CPT1A

Summary

Catalog No.	BGT-PPT-12023
Alternative Names	CPT1, CPT1-L, Carnitine O-palmitoyltransferase I, liver isoform, CPT1A, CPT I, Carnitine palmitoyltransferase 1A, CPT1-L, Carnitine O-palmitoyltransferase 1, liver isoform
Form	Lyophilized
Storage buffer	Lyophilized from a solution in PBS pH 7.4, 0.02% N-Lauroylsarcosine, 1 mM EDTA, 4% Trehalose, 1% Mannitol.
Purity	>90% as determined by SDS-PAGE.
Applications	SDS-PAGE,WB,ELISA,Immunogen,Bioactivity testing in progress
Endotoxin level	Please contact with the lab for this information.
Expression system	E. coli
Accession	P50416
Protein length	Gln406-Thr745, N-His Tag
Nature	Recombinant
Predicted molecular weight	40.75 kDa
Stability and Storage	Use a manual defrost freezer and avoid repeated freeze thaw cycles.Store at 2 to 8 °C for one week .Store at -20 to -80 °C for twelve months from the date of receipt.
Reconstitution	Reconstitute in sterile water for a stock solution.A copy of datasheet will be provided with the products, please refer to it for details.
Species	Human

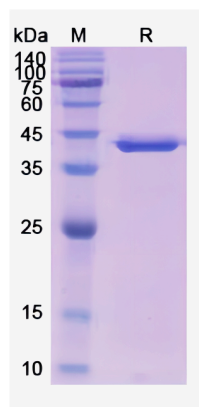
Shipping

In general, proteins are provided as lyophilized powder/frozen liquid. They are shipped out with dry ice/blue ice unless customers require otherwise.

Note

For research use only.

Data Image



SDS-PAGE

SDS PAGE for recombinant Human CPT1A