

Linear Polyubiquitin Monoclonal Antibody

Cat. # BGT-ANT-09103

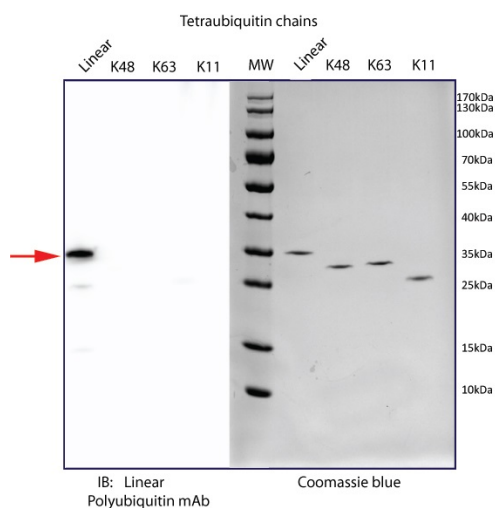
Background: Linear polyubiquitin, or met1-linked polyubiquitin, is polyubiquitin chains linked through the C-terminus of one ubiquitin and the N-terminus of another. Linear polyubiquitin plays important roles in inflammatory and immune responses, particularly within the NF κ B signaling pathway. This linear polyubiquitin monoclonal antibody displays high specificity for linear polyubiquitin chains and is suitable for immunoblot detection of linear ubiquitin chains from tissue or cell lysates.

Application: Western blotting (1 μ g/ml; 1:1000 -1:2500) . The antibody is not suitable for immunoprecipitation and has not yet been characterized for immunostaining procedures. For all applications, optimal conditions should be determined by the user.

Product Information

Immunogen: Linear polyubiquitin
Isotype: IgG2b mouse monoclonal
Purification: Purified from cell culture supernatant using protein A affinity chromatography
Specificity: Antibody detects polyubiquitin linked through the C-terminus of one ubiquitin and the N-terminus of another. Reactivity is independent of species due to the high conservation of ubiquitin across eukaryotes.
Supplied as: Variable Concentration in 10mM phosphate buffer, 0.15M NaCl, pH7.4
Quantity: 100 μ g; Sufficient for >10 Western blot applications
Storage: Store at -20 $^{\circ}$ C. Avoid multiple freeze/thaw cycles. Diluted antibody can be stored at 4 $^{\circ}$ C for up to three weeks.

specifically detects linear over K11-, K48- and K63-linked polyubiquitin



Synthetic tetraubiquitin chains of the indicated linkages (200ng each) were separated by SDS-PAGE and coomassie stained (right) or transferred to nitrocellulose and immunoblotted with Linear Ubiquitin mAb (1 μ g/ml) (left).