

PRODUCT DATA SHEET

Pan-Crotonyl-K polyclonal antibody

Catalog: BGT-ANT-07090

Host: Rabbit

Reactivity: Human, Mouse, Rat

BackGround:

Lysine crotonylation (Kcr) was first discovered about 10 years ago, as a PTM of histone. It was revealed that Kcr is an evolutionarily conserved and common PTM that occurs in both core histone and some non-histone proteins in a variety of organisms. Similar to other types of PTM, Kcr is a reversible modification. The classic histone acetyltransferases (HATs), p300/CBP, PCAF, and MOF, are responsible for most crotonylation events, while the histone deacetylases (HDACs) HDAC1/2/3 and SIRT1/2/3 reverse these reactions. The chromodomain protein CDYL acts as a crotonyl-CoA hydratase to negatively regulate histone Kcr by reducing substrate supply. CDYL-regulated Kcr of RPA1 plays an important role in homologous recombination (HR)-mediated DNA repair (23), while HDAC-regulated histone crotonylation is reduced after DNA damage.

Product:

1mg/ml in PBS with 0.02% sodium azide, 50% glycerol, pH7.2

Molecular Weight:

10-250KDa

Swiss-Prot:

Purification&Purity:

The antibody was affinity-purified from rabbit antiserum by affinity-chromatography using epitope-specific immunogen and the purity is > 95% (by SDS-PAGE).

Applications:

WB, 1:500 - 1:2000

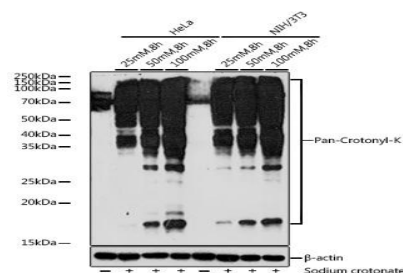
Storage&Stability:

Store at 4 °C short term. Aliquot and store at -20 °C long term. Avoid freeze-thaw cycles.

Modification:

Other Modified

DATA:



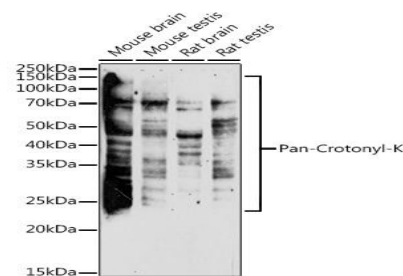
Western blot analysis of extracts of various cell lines, using Pan-Crotonyl-K antibody at 1:1000 dilution. HeLa and NIH/3T3 cells were treated by Sodium crotonate for 8 hours.

Secondary antibody: HRP Goat Anti-Rabbit IgG at 1:10000 dilution

Lysates/proteins: 25ug per lane.

Blocking buffer: 3%

nonfat dry milk in TBST. Detection: ECL Basic Kit . Exposure time: 180s.



Western blot analysis of extracts of various cell lines, using Pan-Crotonyl-K antibody at 1:1000 dilution.

Secondary antibody: HRP Goat Anti-Rabbit IgG at 1:10000 dilution.

Lysates/proteins: 25ug per lane.

Blocking buffer: 3% nonfat dry milk in TBST.

Detection: ECL Enhanced Kit .

Exposure time: 180s.

Note:

For research use only, not for use in diagnostic procedure.